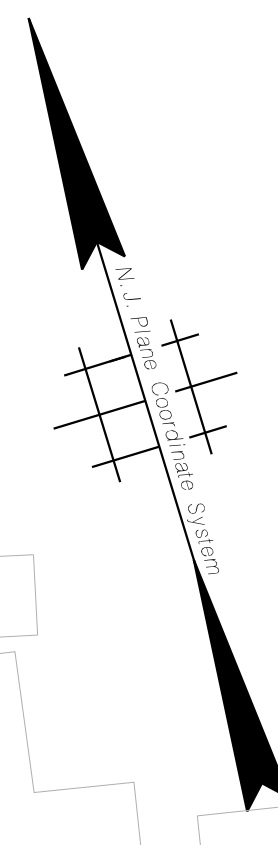
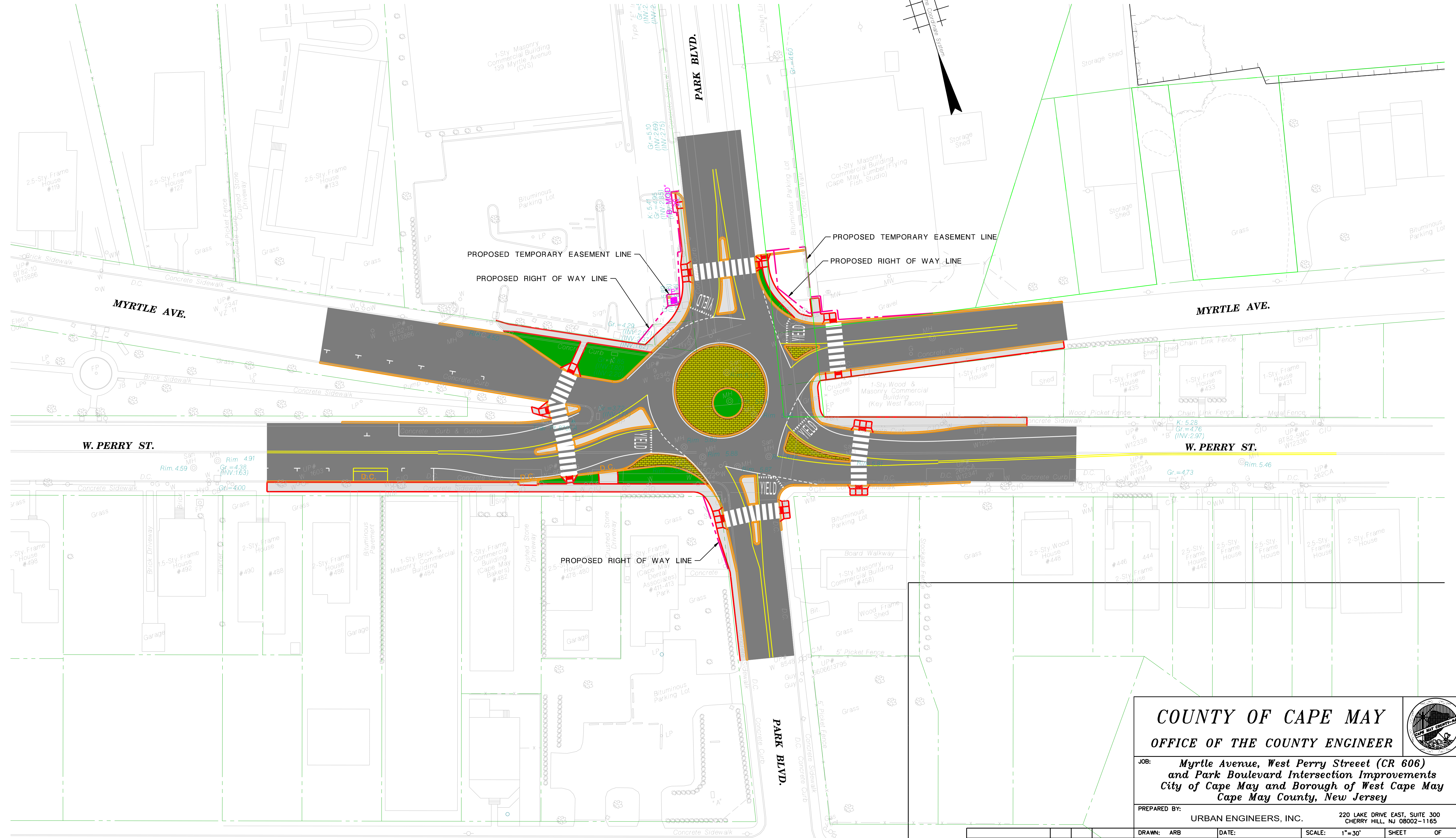
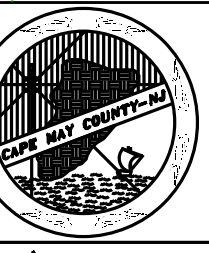


**BOROUGH OF WEST CAPE MAY
CITY OF CAPE MAY**

COUNTY OF CAPE MAY



**COUNTY OF CAPE MAY
OFFICE OF THE COUNTY ENGINEER**



JOB: Myrtle Avenue, West Perry Street (CR 606) and Park Boulevard Intersection Improvements Cape May and Borough of West Cape May Cape May County, New Jersey

PREPARED BY: URBAN ENGINEERS, INC. 220 LAKE DRIVE EAST, SUITE 300 CHERRY HILL, NJ 08002-1165

DRAWN: ARB **DATE:** **SCALE:** 1"=30' **SHEET** OF

PREPARED FOR: COUNTY OF CAPE MAY CITY OF CAPE MAY & BOROUGH OF WEST CAPE MAY CAPE MAY COUNTY, NEW JERSEY

APPROVED: STEVEN B. LOCKE, P.E. N.J. PROFESSIONAL ENGINEER No. 24GE04526300 **DATE**

REVISION	BY	CK'D	DATE